



Hampshire and Isle of Wight Elective Hub Update Briefing

1. Current Update on progress

In the beginning of 2022 Hampshire and Isle of Wight NHS leaders came together and agreed that the construction of a new dedicated 'elective hub' was the best approach to address the backlog waiting list created by the COVID-19 pandemic.

Since then, the programme has been exploring and developing proposals and working up business cases to submit to NHS England to secure funding to enable the construction of the new facility to begin.

Initially the plan was to build a hub with four theatres and forty-four beds to provide capacity for urology (kidney, bladder and urinary), Ear, Nose and Throat (ENT), and orthopaedics (such as hip and knee replacements) on the Royal Hampshire County Hospital site in Winchester. However, as the plans developed the cost estimates of delivering this size of scheme became unaffordable within the funding available, so the decision was taken to focus on developing capacity for orthopaedics only.

Orthopaedics was chosen as a specialty as it has the greatest challenges in terms of backlog and capacity within the Integrated Care System.

2. Proposal

The hub will now contain two lamina flow theatres and a twenty-eight bedded in-patient ward with associated facilities. The unit will be built within the Burrell Wing in the Royal Hampshire County Hospital. It will have a separate entrance and will be ringfenced solely for the purpose of treating elective orthopaedic patients requiring arthroplasty procedures (hip and knee replacements).

Both the Isle of Wight NHS Trust and Portsmouth University Hospitals NHS Trust have opted at this time not to deliver any additional operating at the hub. However, the hub can provide capacity to both Trusts in the future should they require additional capacity. The Hub will initially be shared by both Hampshire Hospitals NHS Foundation Trust and University Hospital Southampton NHS Foundation Trust, who will both offer patients referred to their hospitals who meet the criteria the choice of having their procedures within the hub or at their home Trust site.

The hub will operate six days a week, with inpatient facilities operating over seven days, and accommodate weekends and extended weekdays to maximise the capacity available.

The hub will deliver an additional 2,400 procedures each year. Patients will be referred by their GPs to their home Trusts and if patients are then identified as requiring an elective procedure and they meet the criteria for the hub they will be offered the choice to be treated at the hub. If patients choose to have their procedure undertaken in the hub, they will have their initial pre-assessment undertaken within their home Trust with the final stages being managed by the hub. In approximately ninety per cent of the cases this final element of pre-

assessment will be undertaken remotely, and any x-rays or scans needed can be provided at the patients nearest Diagnostic Centre.

Following their procedure, any follow up required will be undertaken by the patients originating home Trust. Consultants from the current acute hospitals will be operating on their patients that chose to have their procedures in the hub to ensure continuity of care.

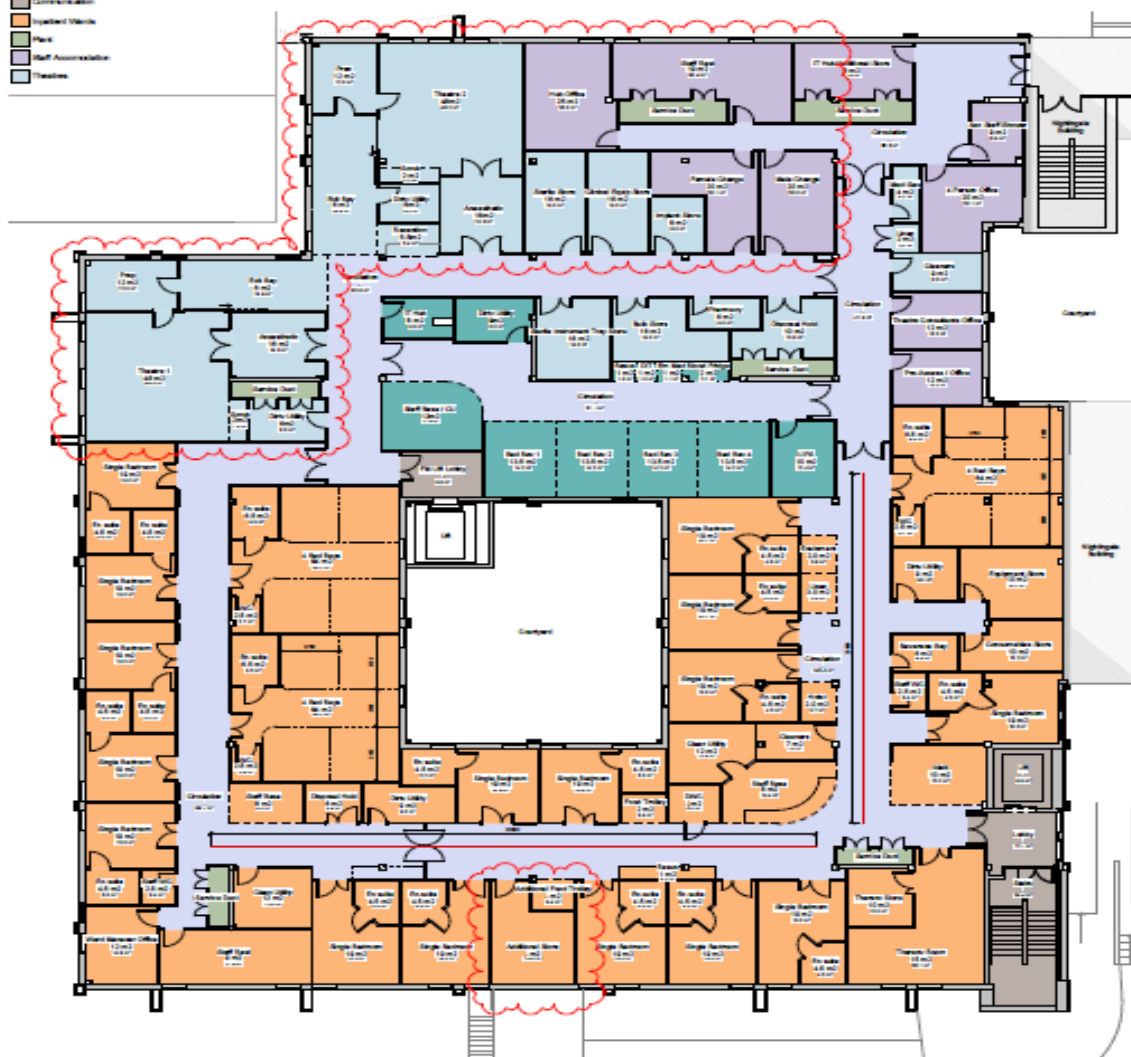
3. Plans

Planning and design work is well underway, and the programme is collaborating with the contractor Integrated Health Projects (IHP) and AD Architects to develop the building specification. The plans involve refurbishing a floor within Burrell Building to create two theatres and the associated inpatient facilities. The diagram below sets out the proposed Hub floor plan:

1:200 LAYOUT - BURRELL WING BUILDING - LEVEL C
THEATRES & WARDS

Room Tag Legend
 1000 - New Theatre
 1100 - New Ward Area
 1200 - New Ward Area

Department Legend
 100 - All Major Theatre
 110 - Clinic
 120 - Communication
 130 - Specialist Clinic
 140 - Ward
 150 - Staff Accommodation
 160 - Theatre

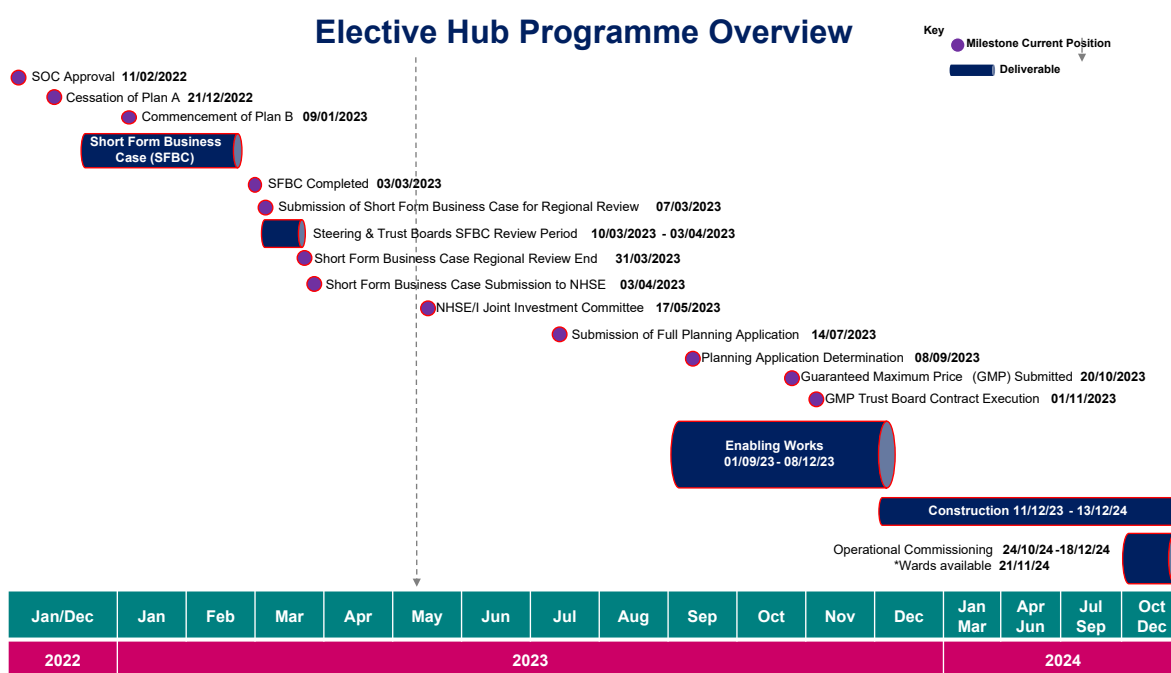


4. Programme timeline

NHS England are supportive of our plans in principle, and the business cases have been submitted to both the regional NHS England team who have reviewed the cases and have now submitted it to the national NHS England team for approval. It is anticipated that the national NHS England Panel will review the case and decide on the funding within the next few weeks.

If approval is granted construction could start as early as September with the facility opening in November 2024.

The programme timeline is set out below:



5. Hampshire Hospitals NHS Foundation Trust New Orthopaedic Outpatient Facility

At the same time as developing the plans for the new elective hub as outlined above, Hampshire Hospitals NHS Foundation Trust is also developing proposals to build a new outpatient facility specifically for orthopaedics. The original scheme was due to be situated in the Burrell Building that will now house the new elective hub. The new outpatient facility will be located adjacent to the Florence Portal Building on the Winchester site (see plan below).

A key rate limiting step to the current orthopaedic service in Winchester is that the facility has a maximum of five outpatient rooms to undertake both elective and non-elective activity. The new department will provide eight outpatient rooms; a co-located plain film x-ray service with an adjacent treatment room; and four fracture clinic assessment booths with an adjacent two bay plaster room.

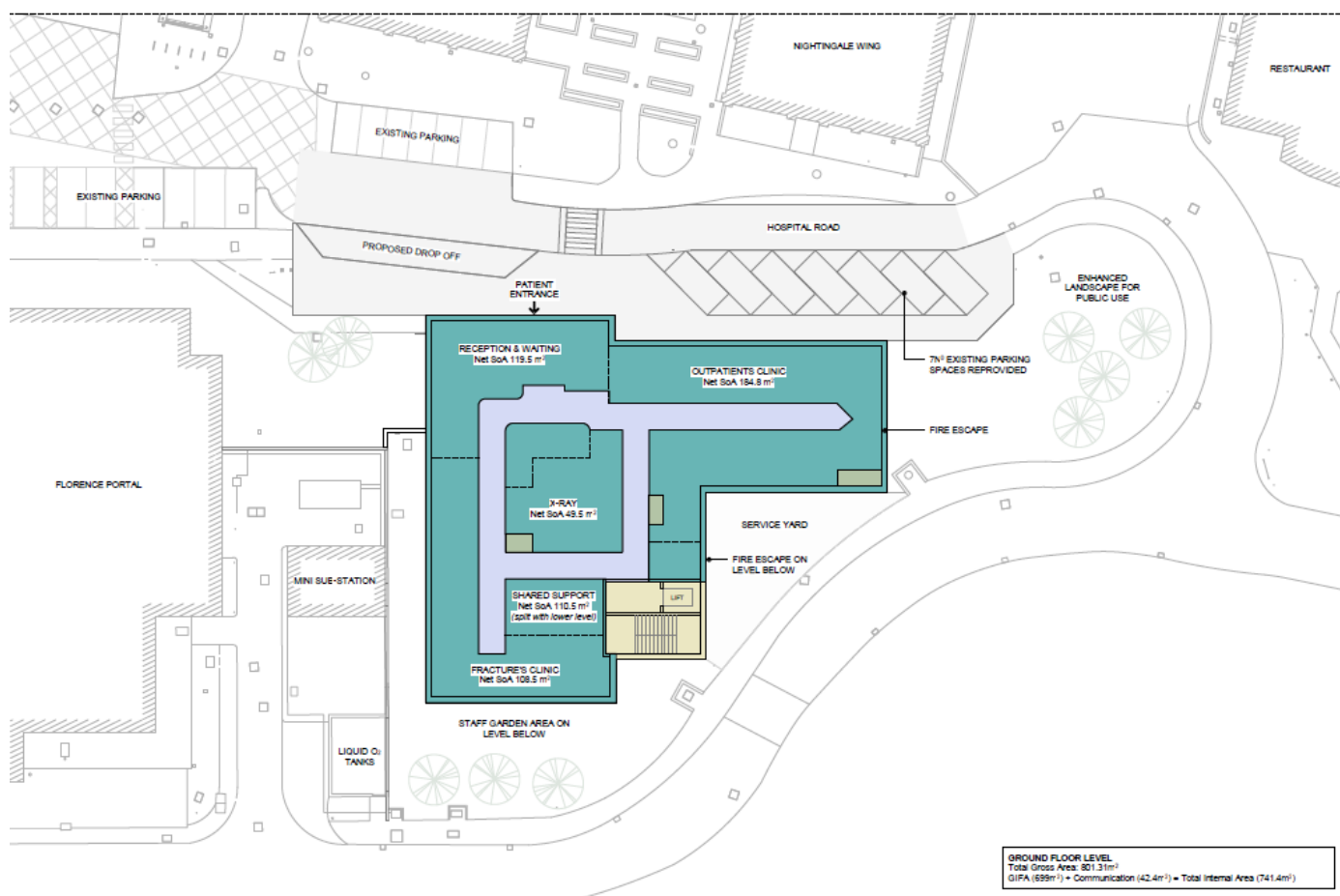
The new facility will meet the forecast growth in elective and non-elective demand for orthopaedic services, enable implementation of a ‘one-stop’ patient pathway approach and reduce a patient’s first appointment waiting time.

Activities delivered in the Orthopaedic Outpatient Facility will include:

- Specialist advice and support, clinical consultation, diagnosis, and treatment planning and delivery for orthopaedic patients
- Therapy consultation, diagnosis and treatment in conjunction with a multi-disciplinary Allied Health team, including physiotherapy, occupational therapy and dietetics
- Application and removal of plaster casts

A business case has been prepared and submitted to NHS England alongside the Elective Hub business case. If approval is given and funding allocated the construction will be undertaken at the same time as the hub following the same timeline.

The proposed location of the new outpatient facility on the Royal Hampshire Hospital Site in Winchester is shown below:



1 500 PROPOSED GROUND LEVEL - OPD BUILDING 1.500
 1:200

The floor plan for the new Orthopaedic Outpatient Facility is set out below:

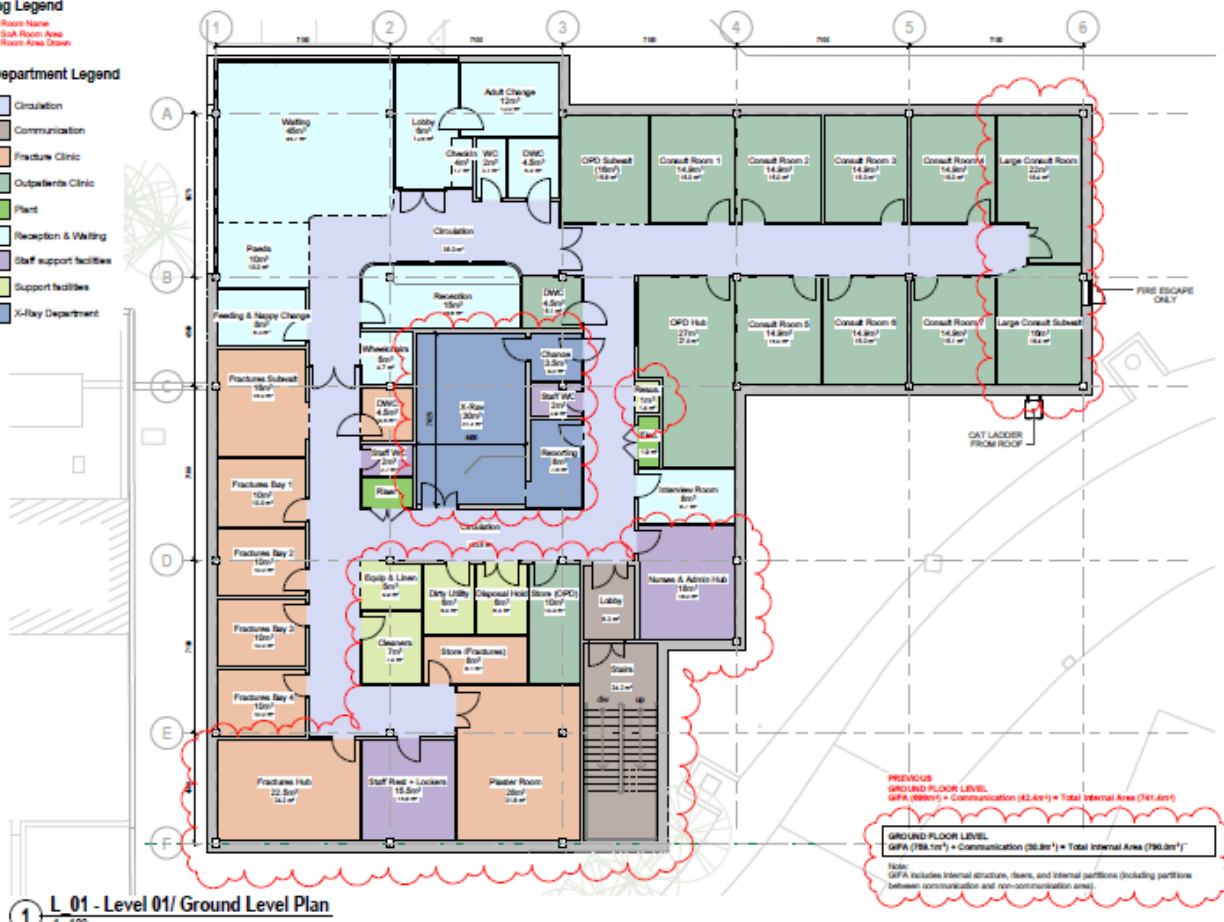
1:200 LAYOUT - ORTHOPEDIC OUTPATIENT DEPARTMENT

Room Tag Legend

Staff Room - Room Name
 12 m² - S&A Room Area
 11.3m² - Room Area Drawn

Department Legend

- Circulation
- Communication
- Fracture Clinic
- Outpatients Clinic
- Plant
- Reception & Waiting
- Staff support facilities
- Support facilities
- X-Ray Department



6. Seeking the views of local people on our plans

During the early stages of the hub development we worked with the four Healthwatches across Hampshire and Isle of Wight to seek the views of local people to inform our plans for the service and design of the building.

Over 2,100 local peoples shared their views which were analysed to identify key themes. Those who completed a survey were invited to join a series of focus groups to explore the key themes in more detail.

We ran three focus groups with 18 people attending. A further three people were interviewed by telephone as they were unable to join a group. The discussions explored:

- How people would feel about accessing the hub and what would make it easier to access
- What information they would like to help them to decide if they would like to be treated at the hub
- How they would feel about providing information online to support their pre-assessment if they chose to go to the hub
- If they are an unpaid carer, does this affect how they feel about going to the hub.

People were generally positive about the option of travelling for treatment at the hub if they can have their operation sooner. The main concerns for patients are having their operation done and knowing that they will receive quality and joined up care. How much sooner they can receive treatment at the hub is also a crucial factor.

Participants highlighted a number of barriers and challenges to accessing the hub for treatment which would be more pertinent to certain patients and impact on their decision about choosing Winchester for treatment.

Practical steps were highlighted that can mitigate some of these access barriers:

- Patients need to be able to make an informed decision about whether to be treated at the hub. Comprehensive information about treatment at the hub and a patient's care pathway should be given to prospective patients to provide them with reassurance and to give them confidence in being treated at the hub
- Communications should be transparent in providing information about potential access issues that patients may face and set out any support that can be given

Participants were generally happy to complete a pre-operative assessment using an online form.

7. Next steps

We are currently waiting for the national NHS England team to consider our business case, however work continues to develop a detailed implementation plan.